

登録有形文化財 鳥山米穀店の
高断熱・高気密・構造補強
修理工事 設計監理 安井妙子 日本

Registered tangible Cultural Property
Toriyama Rice Shop
Highly insulated and airtight structural
reinforcement and repair work
design supervision TAEKO YASUI JAPAN



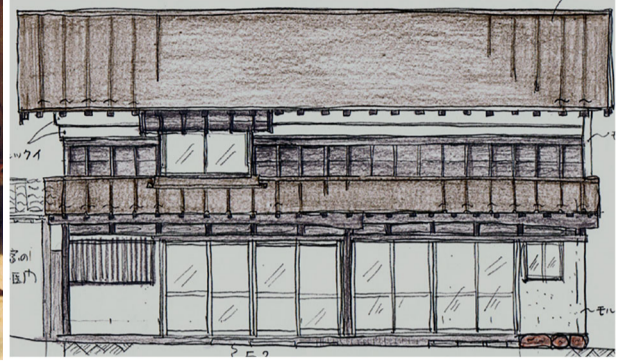
当家は、JR仙台駅から北東に2.5kmほどの位置にある「原町本通り」に所在する天保七年(1836)創業の老舗です。周囲の商店街にはマンションが建ち並んでいます。当主、鳥山文蔵・和子夫妻は周囲が高層化する中、先祖代々、1874年建築の店と住居を守る選択をしました。



1917-09-12



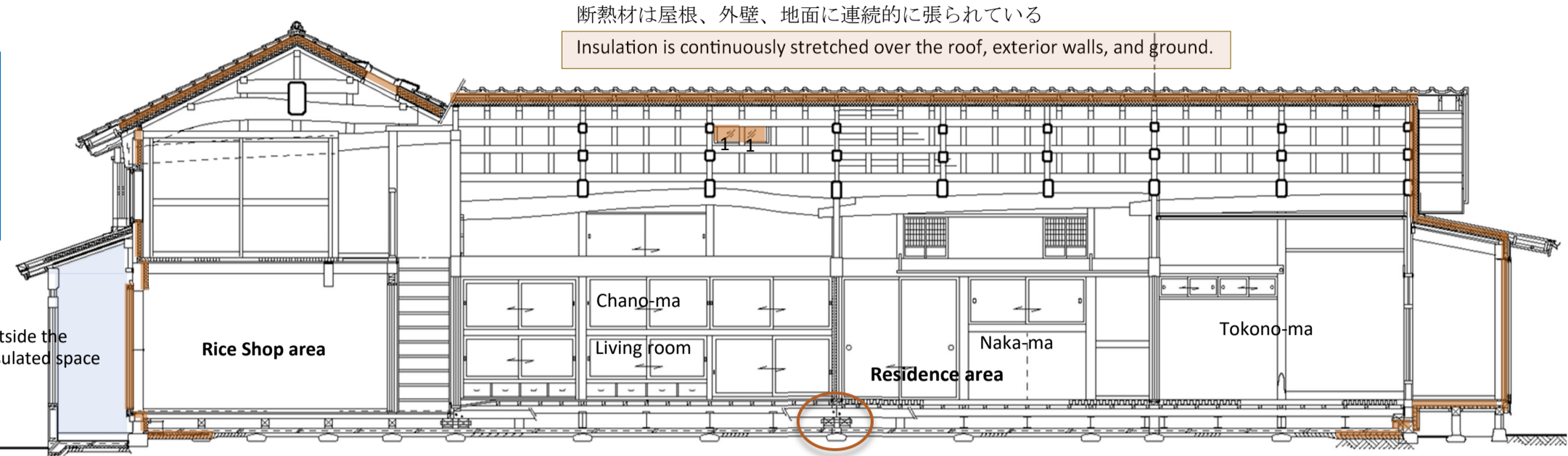
1980年代
Grandmother standing in front of the store



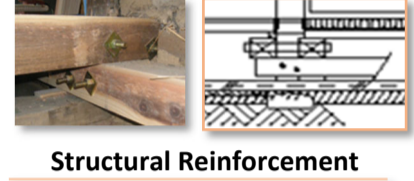
2008
Facade sketch before repair



2009 竣工式：前列・神職と鳥山ご家族
Completion Ceremony: Front Row, Priest and Toriyama Family

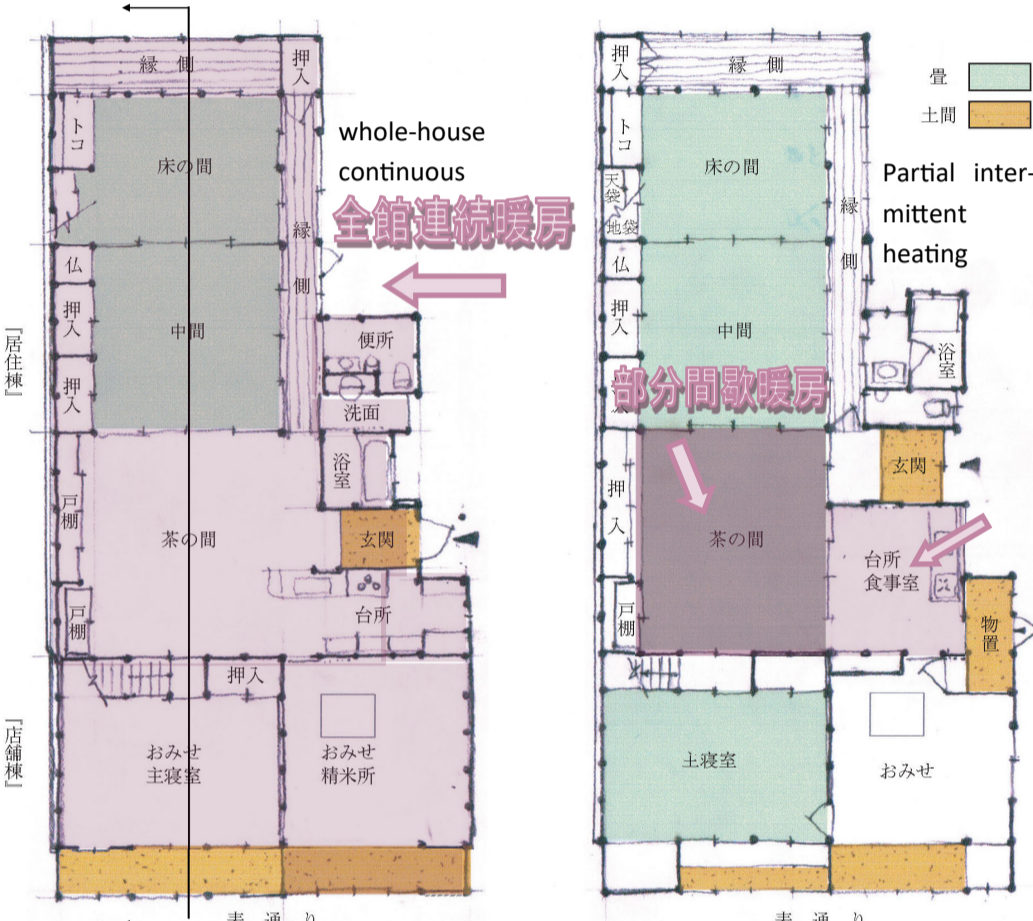


The family is located on Harano-machi-hon Street, 2.5 km northeast of JR Sendai Station, and was established in 1836 (Tempo7). The surrounding shopping area is lined with apartment buildings. The owner of the store has chosen to protect his store and residence, which was built in 1874 by his ancestors, even as the surrounding area has become high-rise.

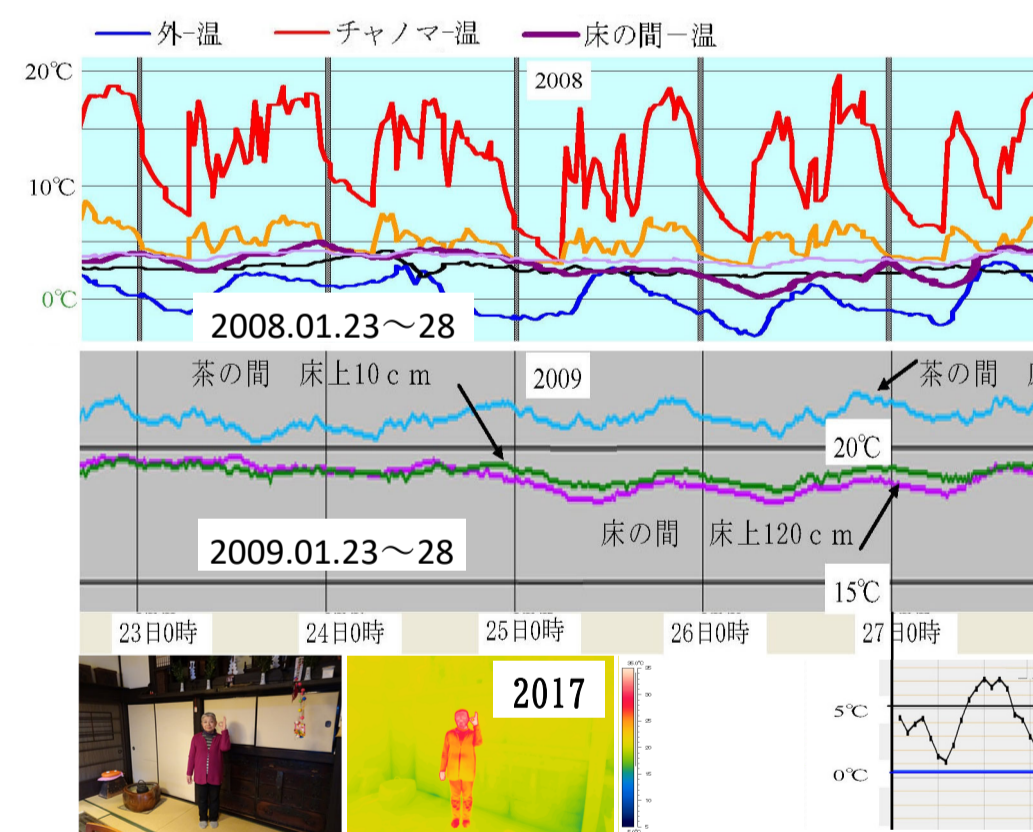


Structural Reinforcement

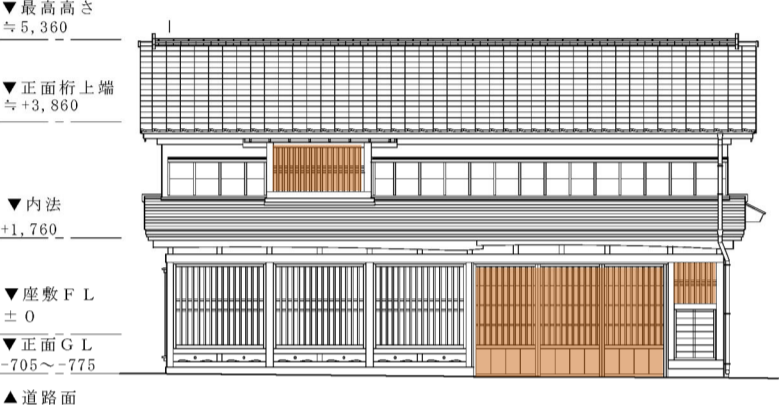
A-A 断面詳細図
A-A Cross Sectional View



修理後1階平面図
Plan view after restoration



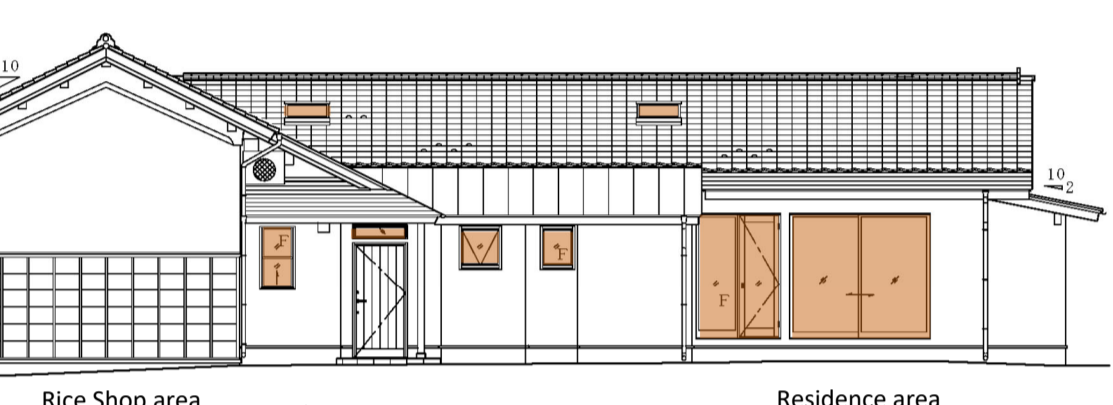
屋内温度環境 2008・2009・2017



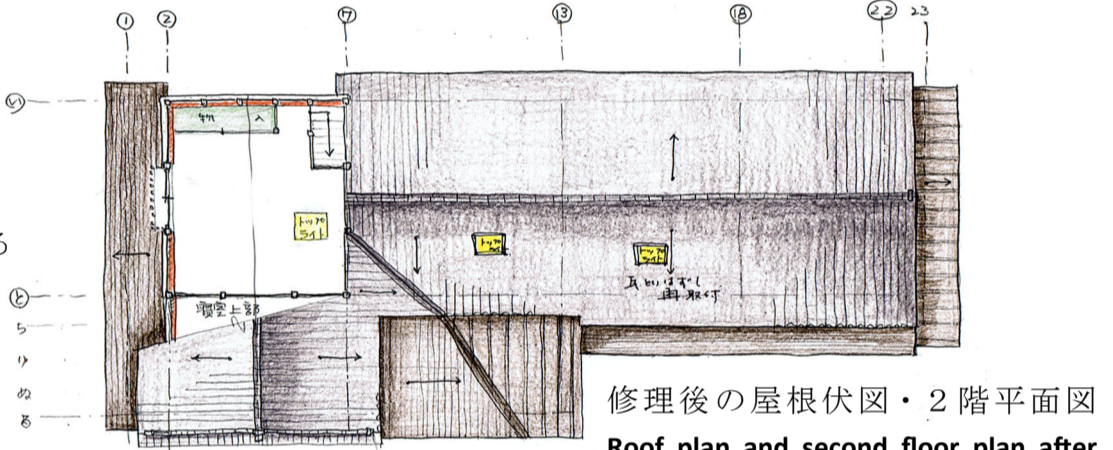
修理後南正面図
Repaired South Front View



当初の屋根は木材で葺かれてた
The original roof was pitched with wood.



修理後東側面図
East elevation after restoration



修理後の屋根伏図・2階平面図
Roof plan and second floor plan after restoration



鳥山鳥山米穀店正面の夜景
Night view of the front of Toriyama Rice Shop

On the left are the indoor environmental data for winter before and after the repair work. Before the repair work, only two rooms were heated, showing temperature fluctuations from 5°C to 20°C. In 2009, after the repair work, the whole building is heated continuously by low-temperature water radiation panels, and the room temperature is constant at around 20°C. January 2017 shows that its performance is sustained.

2017 Data courtesy of Associate Professor Masayuki Mae, University of Tokyo.



お店を正面から見る
Rice Shop area



重ね梁が美しい居間
Living room with Beautiful overlapping beams



中間の北面 奥は床の間
North side in the Naka-ma ,Tokono-ma in the back



神棚の正月飾り
New Year's decorations on the kamidana



2009年
正月を迎えた床の間
Tokono-ma (alcove) for New Year's Day